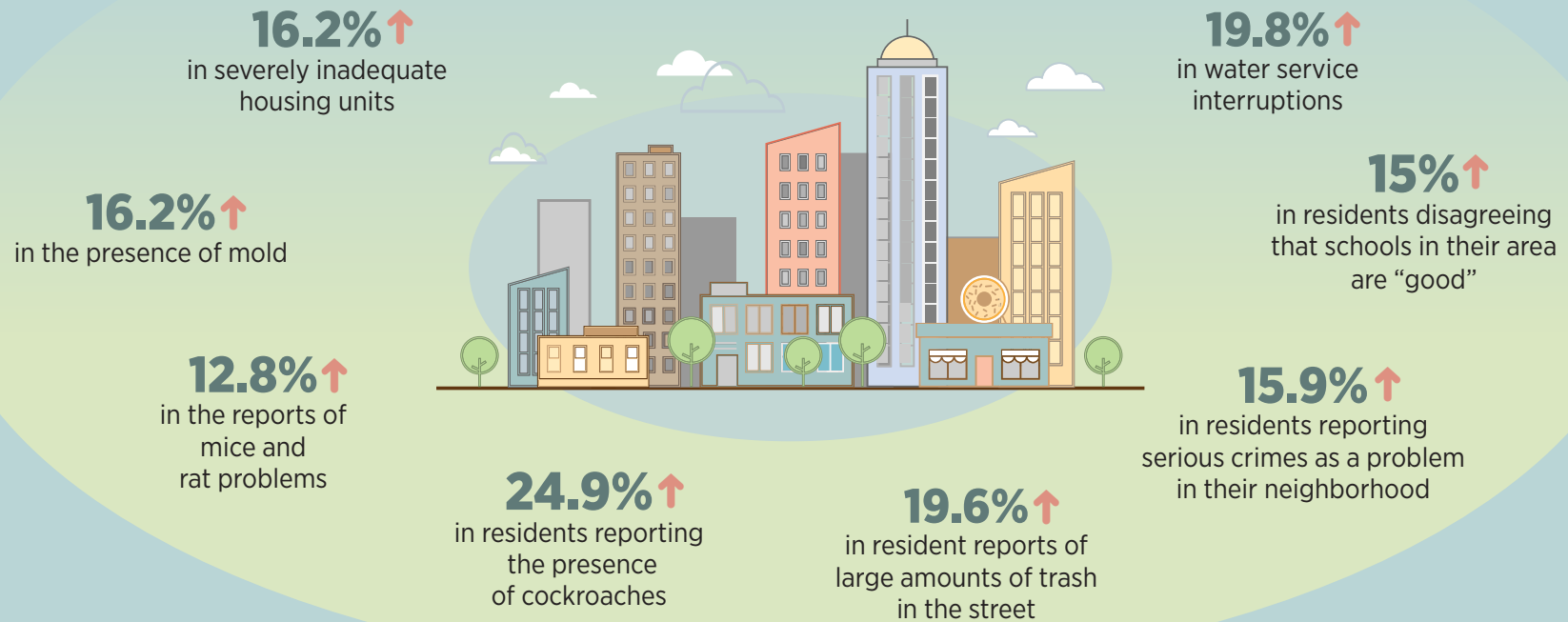


The Cost of Rent Control on Housing and Neighborhood Quality

Rent regulation hinders housing providers' ability to maintain their properties, ultimately diminishing communities and quality of life for renters. Research shows a strong correlation between an increase in rent-controlled units in an area and the following housing and neighborhood quality issues:



The most effective way to increase housing affordability, accessibility, and availability is to increase the supply of housing rather than implement flawed policies that ultimately diminish the quality of life for renters and the surrounding community.